

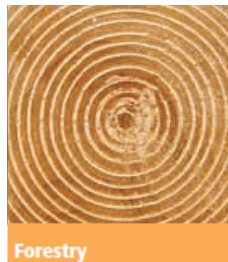
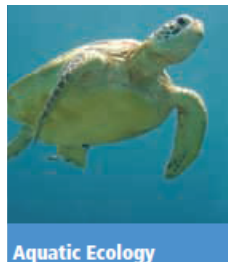
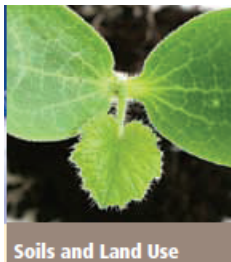


EVERY SCHOOL'S GUIDE TO THE ENVIROTHON

WHAT IS THE ENVIROTHON?

The Envirothon is a fun, academic challenge event that teaches students practical knowledge and application of environmental topics. It is the only one in the nation that challenges students to think critically about the natural world and their role in it. In the high school event, the team that scores the greatest number of points wins the county competition and moves on to the Pennsylvania Envirothon state competition. Even though the winning middle school team does not move onto a state competition, the academic lessons and self-confidence the students gain make this event worthwhile.

At the day-long Envirothon, students compete using their knowledge in the following topic areas:



As a team, students will develop creative solutions to environmental problems. They may be asked to measure a tree, identify soil characteristics, list functions of a wetland, or distinguish the call of a bird. Team answers are evaluated by practicing environmental professionals. This opportunity is a great way to prepare students for the high school competition!

Students develop study skills, practice effective teamwork, and learn natural resource management and ecology by participating in the Envirothon. At the same time, they gain valuable exposure to a range of disciplines and potential career paths while practicing environmental stewardship.

GETTING STARTED:

- 1. A teacher or advisor needs to put together a team of four to five students (Grades 6-8). Team members do not have to be in the same grade.**
- 2. Contact the Berks County Conservation District to register your team with the following information:**
 - Your Name,
 - Your School/Organization
 - Number of teams
- 3. The Berks County Conservation District will give you a teacher/leader's guide and learning materials.**
- 4. Now it's all up to you and your team; you study the material at your own pace! We encourage you to ask questions or request assistance from the Berks County Conservation District.**
- 5. On the scheduled date of the Envirothon, your team(s) will go through a series of subject tests at Nolde State Forest under the guidance of the Berks County Conservation District and partnering agencies.**



If you are interested in starting a team at your school or have questions about the Envirothon, please contact Kate Keppen at the Berks County Conservation District at 610-372-4657 ext: 211

