

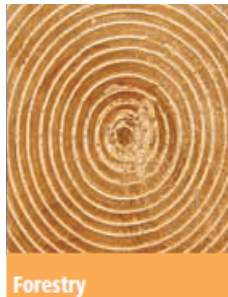
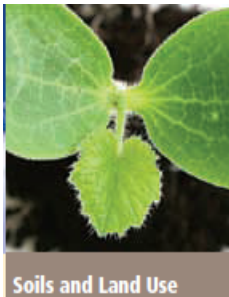


EVERY SCHOOL'S GUIDE TO THE ENVIROTHON

WHAT IS THE ENVIROTHON?

The Envirothon is a fun, academic challenge event that teaches students practical knowledge and application of environmental topics. It is the only one in the nation that challenges students to think critically about the natural world and their role in it.

At the day-long Envirothon, students compete using their knowledge in the following topics:



As a team, students will develop creative solutions to environmental problems. They may be asked to measure a tree, identify soil characteristics, list functions of a wetland, or distinguish the call of a bird. Team answers are evaluated by practicing environmental professionals. The team that scores the greatest number of points wins the county competition and moves on to the Pennsylvania Envirothon located at University of Pittsburgh Johnstown and Winber Borough Recreational Park. The best team in each state then competes with the winning teams from Canada in a North American competition known as the Canon Envirothon.

By participating in the Envirothon program, students develop study skills, practice effective teamwork, and learn natural resource management and ecology. They also gain valuable exposure to a range of disciplines and potential career paths while committing to environmental stewardship.

GETTING STARTED:

- 1. A teacher or advisor needs to put together a team of five students in grades 9-12. Team members do not have to be in the same grade.**
- 2. Contact the Berks County Conservation District to register your team with the following information:**
 - Your Name,
 - Your School/Organization
 - Number of teams you are bringing
- 3. The Berks County Conservation District will give you a teacher/leader's guide and learning materials.**
- 4. Now it's all up to you and your team - you study the material at your own pace! We encourage you to ask questions or request assistance from the Berks County Conservation District.**
- 5. On the scheduled date of the Envirothon, your team will go through a series of subject tests at Nolde State Forest under the guidance of the Berks County Conservation District and partnering agencies.**



If you are interested in starting a team at your school or have questions about the Envirothon, please contact the Berks County Conservation District Envirothon Coordinator at 610-372-4657.

