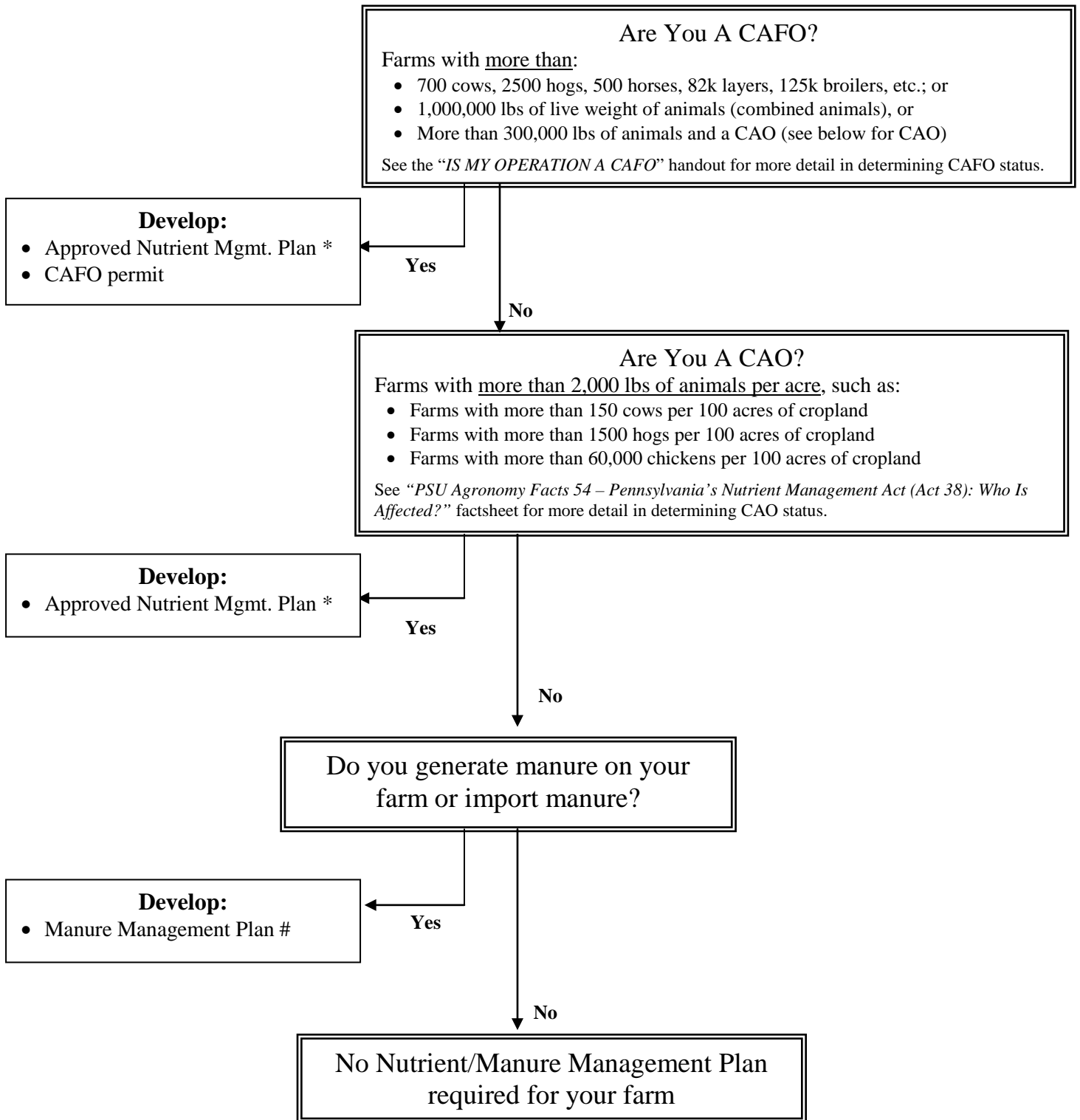


# What type of Nutrient/Manure Management Plan do you need for your farm?



\* **Nutrient Management Plan:** written to Nutrient Management Act 38 standards by certified specialist and approved by Conservation District or SCC.

# **Manure Management Plan:** certified specialist not necessary (farmer can develop the plan themselves according to Manure Management Manual standards), no submission/approval required.