

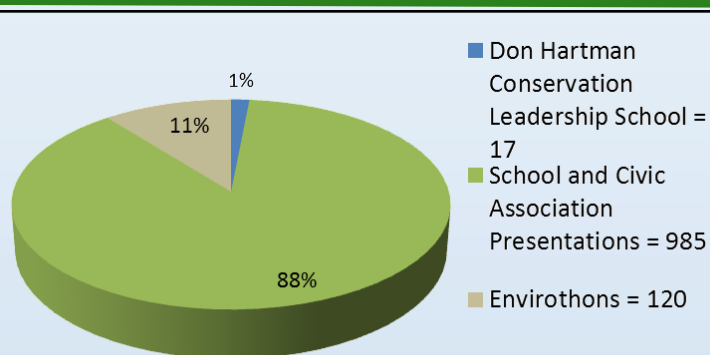
BERKS COUNTY CONSERVATION DISTRICT 2012 ANNUAL REPORT

As I reflect on 2012 and consider the diversity of our Conservation District it is amazing to me how unique our opportunities are to be able to interact with every person who lives in Berks County. We depend on responsible government, clean water resources, good farming practices, sound and responsible land use planning, job opportunities, and a quality education. On a continually shrinking budget our District holds fast to our principles as we continue to advocate for consistent training, education, compliance and outreach to the people who live and work here. We have had to narrow our focus on our core mission of soil and water but we refuse to give up on our West Nile Virus Program or our environmental outreach, especially to our young people through our scholarship program.

When I read the essays from our scholarship recipients, I am renewed in my faith that a new generation of stewards will continue on with our mission. Reading about the emergence of the Conservation Movement as a result of the Dust Bowl reminds me that often we lose focus and drift about aimlessly until a tragedy makes us stop and take stock of things. It is difficult to maintain a passion for a cause when we all have so much living to do. Looking forward, I wonder what the next environmental tragedy will be that will cause the Movement to re-ignite and perhaps reinvent itself?

We as a Board are constantly challenged by new and tougher regulations, lack of funding streams, unfunded mandates, hiring and training staff, working on a succession plan, and balancing our budget, but we must remember to celebrate our success, be positive about our victories and be inspired by our youth.

Let the good work continue! - Piper Sherburne, Chair



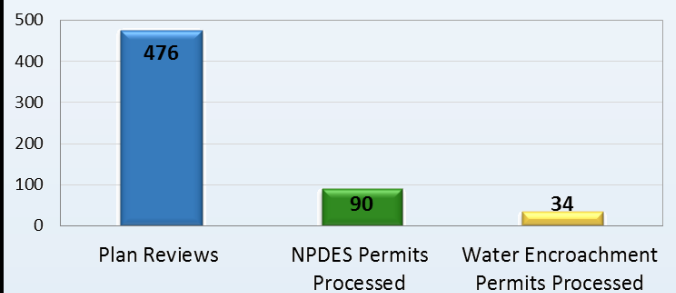
Education Program: Individuals Receiving Environmental Education

Urban Team

**Eric Konzelmann, Ann Sellers,
Kelly Grube, Kevin Witmier**

With over 3,214 acres of disturbed soils in approved E&S plans in 2012, approximately 19,284,000 gallons of water is treated by BMPs for every 1-inch rain event!

Urban Team: Plan Reviews & Inspections



Urban Team: Inspections & Compliance



Gold Affiliate Memberships

County of Berks
Pine Creek Valley Watershed Association
Terre Hill Stormwater Systems

BCCD received a PENNVEST Grant for almost \$2 million. The PENNVEST Grant is the largest grant funding received in the history of the Conservation District. The BCCD is administering the grant which will provide construction of manure storage solutions and barnyard area improvements on four Berks County farms.

Silver Affiliate Memberships

Aqua-Terra Environmental Ltd.
Barwis Construction, LLC
Birdsboro Borough
Boyer Engineering, LLC
Bursich Associates
District Township
East Coast Erosion
Edward B Walsh & Associates, Inc.
Exeter Supply
Exeter Township

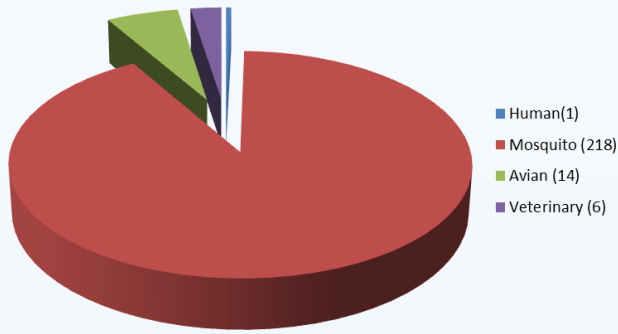
Irish Creek Excavating, Inc.
Landis C Deck & Sons Site Contractors
Leesport Borough
Langan Engineering
Larson Design Group
Leesport Borough
LTL Consultants, Ltd.
Ludgate Engineering Corporation
Maidencreek Township

Red Barn Consulting, Inc.
Tarson, LLC
TeamAg, Inc.
Wyomissing Data Systems, Inc.



Urban Team: West Nile Virus

2012 Berks County West Nile Virus Program Summary



The 2012 mosquito season produced a record number of West Nile Virus positives statewide as well as in Berks County. In Berks, 33, 627 mosquitoes were collected and a total of 239 samples tested positive for West Nile Virus including 218 Mosquito pools, 14 Avian cases, 6 Veterinary cases and 1 Human case in the City of Reading that unfortunately resulted in the death of the infected individual. Additionally, the earliest Mosquito positive ever recorded in the state was collected May 2, 2012 in Exeter Township, Berks County. A mild winter and warm, wet spring were believed to contribute to the record number of West Nile positives in 2012.

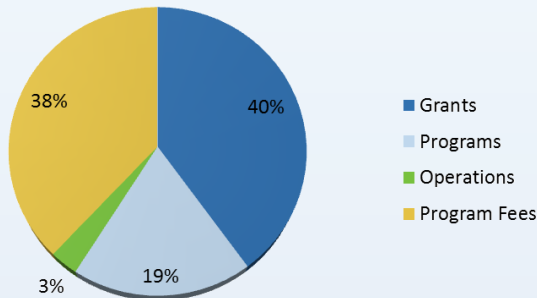
Agricultural Team

Damian Painter, Christine Esterline, Jeff Overstreet and Olivia Carlson

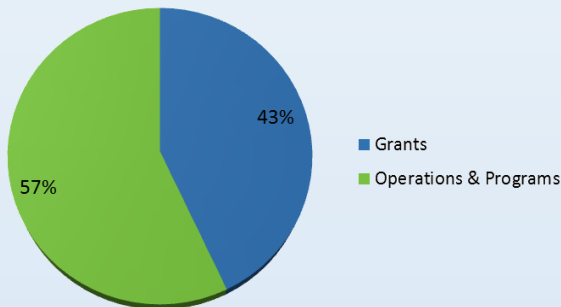
The Agriculture Resource Team was very busy in 2012. Not only did we write 23 Conservation Plans ensuring soil conservation measures over 1,540 acres, but we also continued to administer the Nutrient Management Plan program for Berks County. As part of that program, we performed 35 status reviews on farms who currently have a plan, 32 of which were in compliance with their plans. With our assistance, the other 3 were able to achieve compliance. **The Ag Team also reviewed 30 Nutrient Management Plans, which enable farmers to manage their manure in a responsible manner. The 30 plans led to the responsible application of manure from over 5.5 Million pounds of live animal weight over 2,253 acres of farmland.** The Ag Team was also involved in numerous educational events, including Day at the Farm at the Joe Jurgielewicz & Son duck farm. We held 5 separate workshops to introduce Berks County small farmers to the new DEP Manure Management Manual. Because of those workshops, we were able to educate 160 farmers about the importance of developing a manure management plan. We also held a workshop that showcased Penn State's new website, PAOneStop.org, an online mapping utility developed especially for farmers. From this workshop, 18 farmers left with a fully developed Manure Management Plan. In addition, we personally outreached with 70 farmers on their farms to explain the new regulations involving Manure Management and Agriculture Erosion and Sediment Plans.

Financial Report

2012 Income



2012 Expenses



The grants that the BCCD administers are funds that go to local landowners and organizations to install practices that improve the environment!

Operations Team

Dan Greig, Tammy Bartsch, and Kate Keppen

Bronze Affiliate Memberships

Berks Conservancy
 Berks Surveying
 Bern Township
 Bernville Grange #1887
 Bethel Township
 Blue Mountain Wildlife
 Borough of Bechtelsville
 Borough of Kutztown
 Borough of Hamburg
 Borough of Kenhorst
 Borough of Robesonia
 Borough of Wernersville
 Centerport Borough
 Gouglersville Grange #1743
 Great Valley Consultants
 Landmark Homes
 Laureldale Borough
 Leesport Gun Club, Inc.
 Longswamp Township
 Maiden Creek Watershed Association

Board of Directors

Piper L. Sherburne, Chairperson
 Glenn R. Seidel, Vice Chairman
 Mark A. Wolfskill, Treasurer
 T. John Bicksler, Farmer Member
 Brian D. Boyer, Public Member
 Larry E. Kehl, Farmer Member
 Christian Y. Leinbach, County Commissioner Member

Associate Directors

Leonard Good
 Bruce Latshaw
 James McCarthy
 Steve Miller
 John Schueller
 Rodale/Mark Smallwood
 Ross Stowell
 Jason Bailey
 Lori Sandman

Marion Township
 Maxatawny Township
 North Heidelberg Township
 Ontelaunee Township
 Penn Township
 Perry Township Game Association
 Richmond Township
 Rockland Township
 Senator Judy Schwank

Borough of Sinking Spring
 Borough of St. Lawrence
 Systems Design Engineering, Inc.
 Borough of Topton
 Tulpehocken Chapter Trout Unlimited
 Virginville Grange #1832
 VIST Financial Corporation